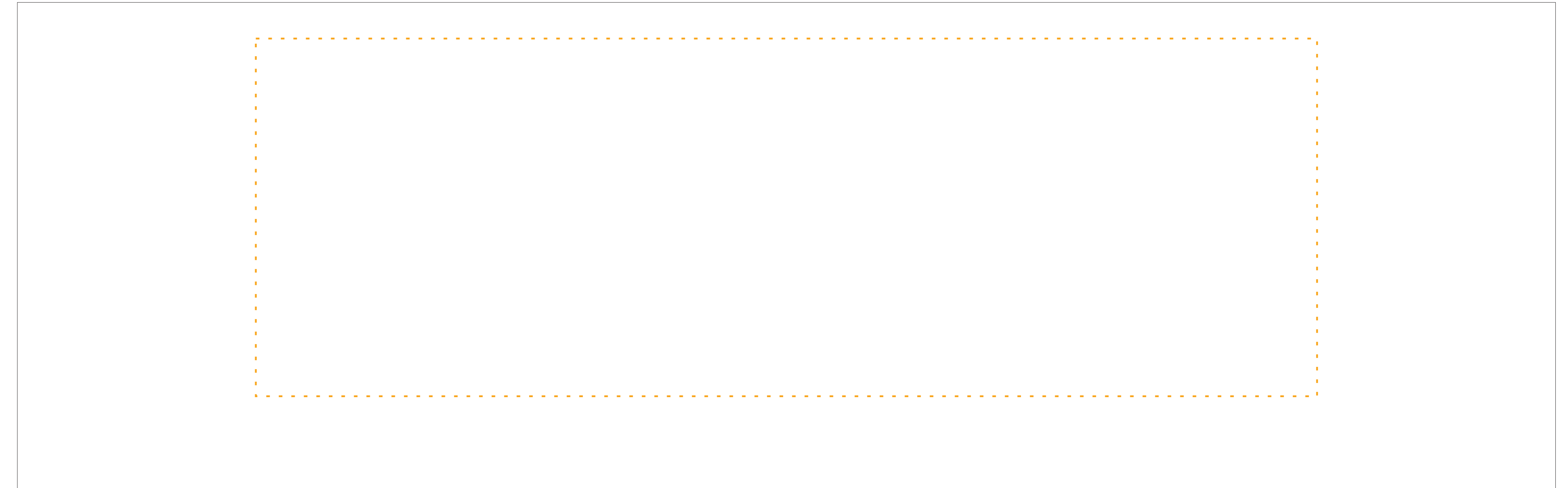
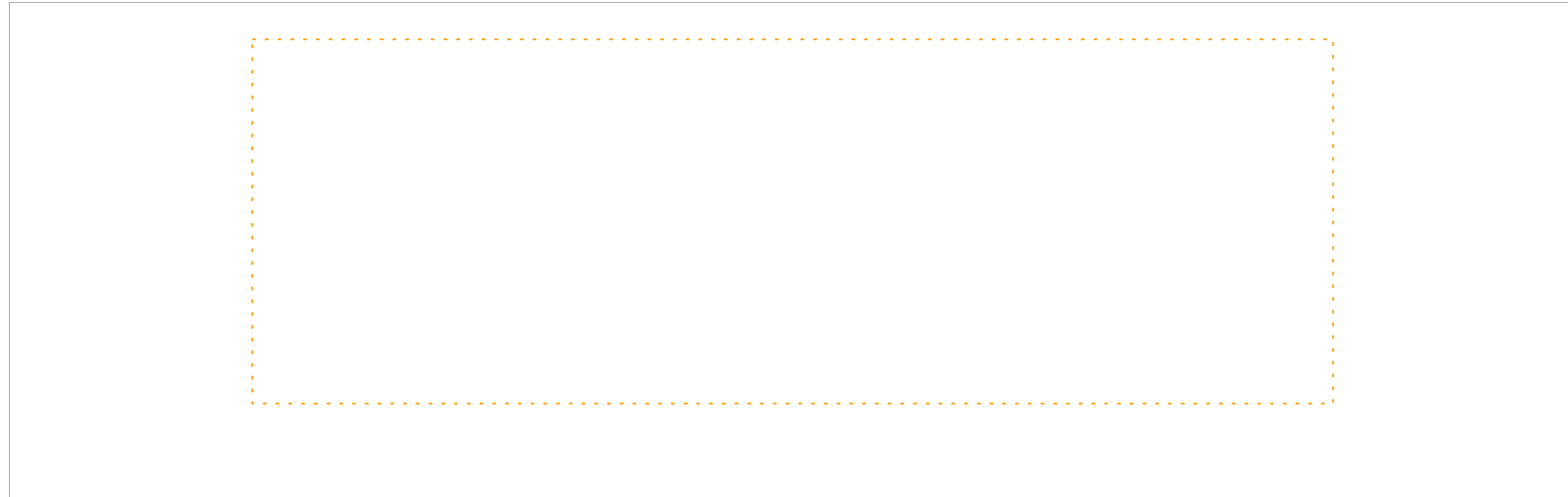


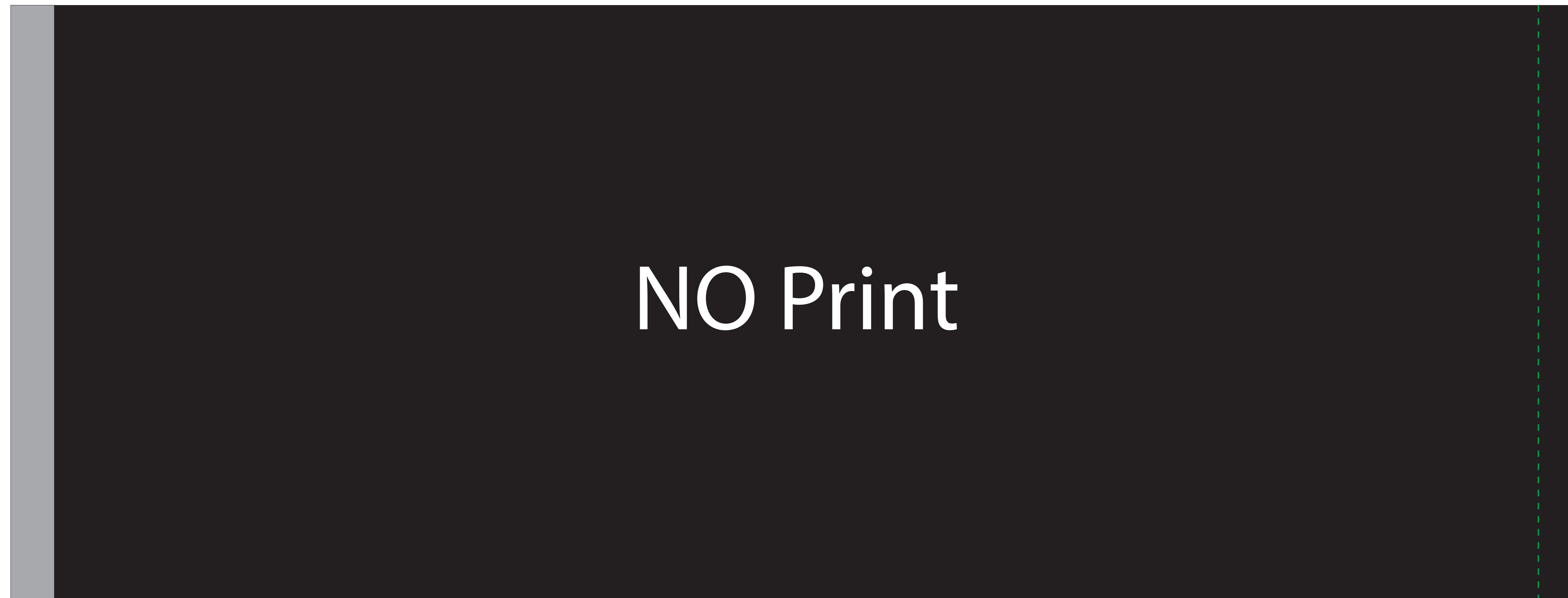
# Visual Purposes

Back

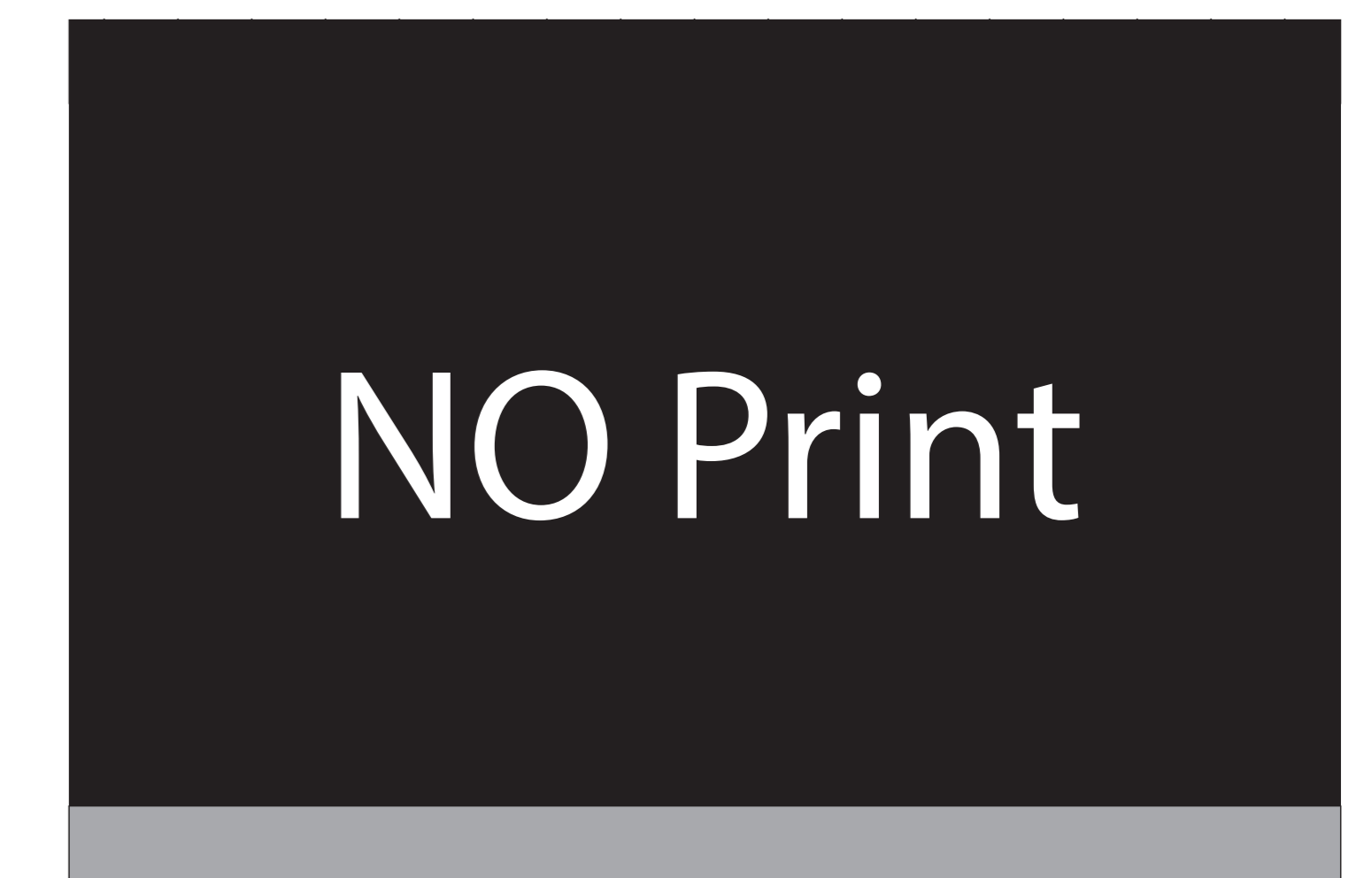
Front



Directors Chairs - Backrest Cover



Directors Chairs - Seat Cover

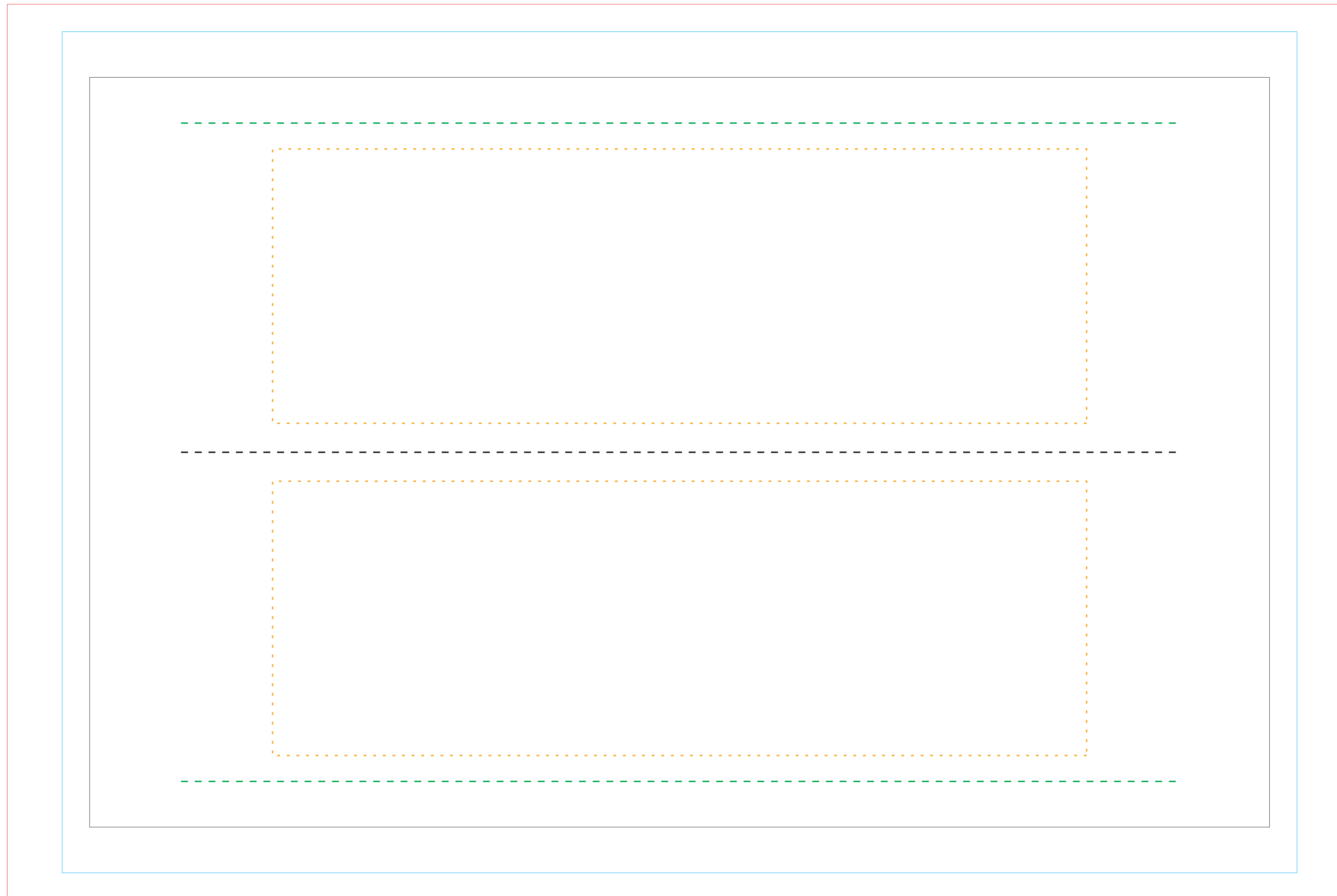


Directors Chair -  
Arm Rest

# Production Purposes

***Back - Artwork to be upside down***

***Fold*** .....



***Front - Artwork to be upright***

**Directors Chairs - Backrest Cover**

Finish area (Backrest) - 645mm x 410mm

- Have all fonts converted to paths.
- At 100% artwork needs to be 72 DPI.
- All artwork needs to be layered and not flattened.

-  bleed
-  finished product
-  safe working area
-  Hem